

MONTHLY MEMBERSHIP PROGRESS REPORT

LOCATION MICHIGAN

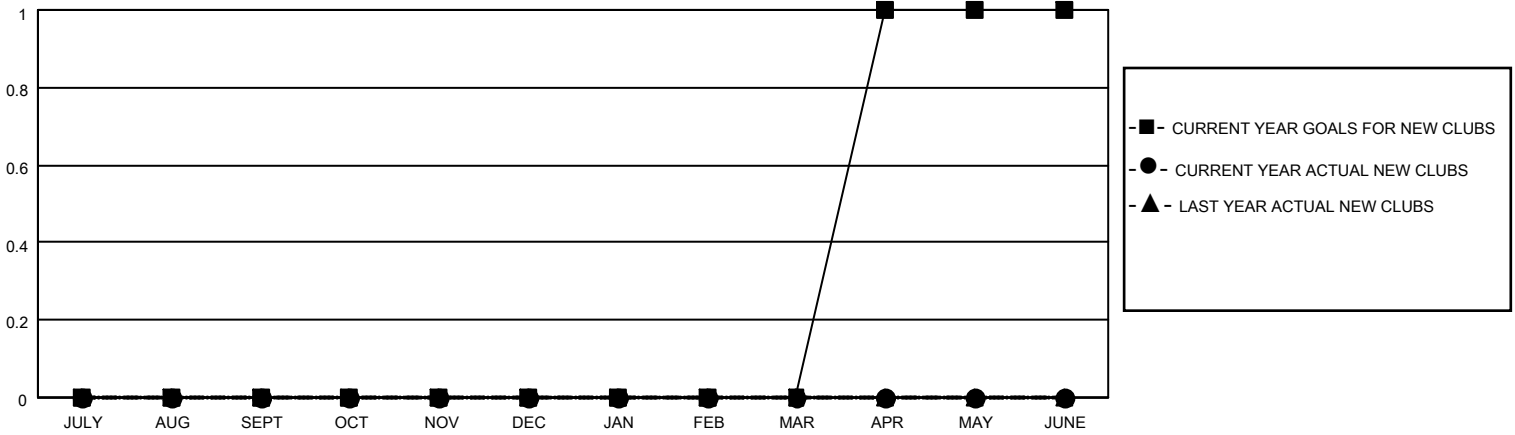
District 11 B2

Results as of: 10/31/2020

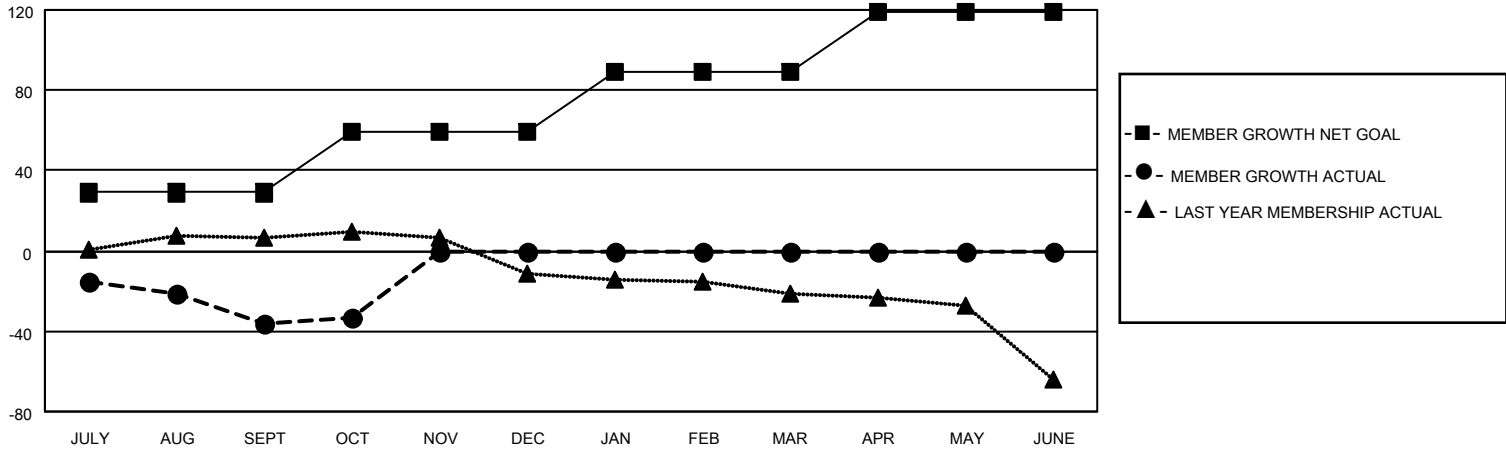
Clubs			
RESULTS FOR 2020-2021			
QUARTER	NEW CLUB GOAL	NEW CLUBS	DROPPED CLUBS
JULY/AUG/SEPT	0	0	0
OCT/NOV/DEC	0	0	0
JAN/FEB/MAR	0	0	0
APR/MAY/JUNE	1	0	0

Members			
RESULTS FOR 2020-2021			
QUARTER	MEMBER GROWTH NET GOAL	MEMBER GROWTH ACTUAL	DROPPED MEMBERS ACTUAL (including transfers)
JULY/AUG/SEPT	29	4	40
OCT/NOV/DEC	30	6	3
JAN/FEB/MAR	30	0	0
APR/MAY/JUNE	30	0	0

GOALS AND ACTUAL NEW CLUBS CUMULATIVE



GOALS AND ACTUAL MEMBERS CUMULATIVE



DROPPED CLUBS: 0	7 CLUBS OF 35 ADDED 1 OR MORE NEW MEMBERS	<u>GENDER DISTRIBUTION</u> MALE 613 (68.57%) FEMALE 281 (31.43%)
<u>DROPPED MEMBERS</u> DECEASED 7 CLUB CANCELLED 0 OTHER 36 TOTAL 43	CLICK HERE FOR CUMULATIVE MEMBERSHIP DATA	TOTAL FAMILY UNIT MEMBERS 210 FAMILY MEMBERS PAYING HALF DUES 105